

# Welcome to the Haneda Chronogate Visitor Tour

Thanks to the continued support of our customers,  
Yamato Group celebrated its centenary in 2019.

The last 100 years has seen so many changes  
in lifestyle, business and society.

Our services and role also transformed  
as we continued to grow.

Haneda Chronogate, where we stand today,  
plays a key part in supporting  
an array of logistics operations including TA-Q-BIN.

This visitor tour offers the experience to see  
the scheme of TA-Q-BIN, our equipment and systems  
and the vision for the next 100 years of Yamato Group  
through videos, displays and seeing actual parcels  
as they pass by in front of your very eyes.

So look, listen, touch and enjoy.



## INFORMATION

|                          |   |  |
|--------------------------|---|--|
| RESERVATION              | Please reserve in advance via our website.  |  |
| ADMISSION                | FREE  |  |
| TELEPHONE                | <b>03-6756-7180</b><br>[OPENING HOURS 9:00-12:00, 13:00-17:00 *except days closed ]<br>*Please note that staff may not be available to answer the phone when assisting other customers. |  |
| DAYS CLOSED              | Mondays (Excluding holidays. On those days, we will open on Monday and close the following day),<br>Year-end/New Year's holidays, Obon holidays.  |  |
| TIME REQUIRED FOR A TOUR | Approx. 90 minutes  |  |

### ACCESS 11-1 Haneda Asahi-cho, Ota-ku, Tokyo

\*Please use the train or other form of public transport to come here.



#### 5 minutes' walk from Anamori-inari Station on the Keikyū Airport Line

Exit the station and turn left. As you come out on Loop Road No.8 (Kanpachi-dori), cross the Haneda Asahi-cho intersection and turn right. Our reception building is about 50 meters ahead on the left.

#### 10 minutes' walk from Tenkūbashi Station on the Tokyo Monorail

Exit the station and turn right. As you come out on Loop Road No.8 (Kanpachi-dori), cross the intersection and turn left. Our reception building is about 50 meters ahead on the right.

### Official accounts on social media



Yamato Group official channel



YamatoGroup



yamato\_transport



@yamato\_19191129

R6.4.1



Haneda Chronogate Visitor Tour

# Experience Yamato Group's "art of transport" across 6 areas.



**1**

## 100THANKS

Find stories of Yamato Group's through history

A look back on our history and how customers' support helped us to develop TA-Q-BIN and Yamato Group.

**2**

## THEMED EXHIBITION AREA

Enjoy a special exhibition

Presenting corporate topics including newspaper advertisements and TV commercials through displays and video.

**3**

## VISITORS HALL

From past to future, know it all through this video

The opening video is about the ideas and systems behind TA-Q-BIN, a service that has changed people's way of life, and the vision of Yamato Group.

**4**

## VISITORS CORRIDOR

Get inside of the logistics building

From the walkway, you can see actual parcels as they pass by and also watch a video about Yamato Group's various services.

**5**

## CENTRAL CONTROL ROOM

Catch a glimpse of the brain of the logistics terminal

An insight into our efficient operations and tight security.

**6**

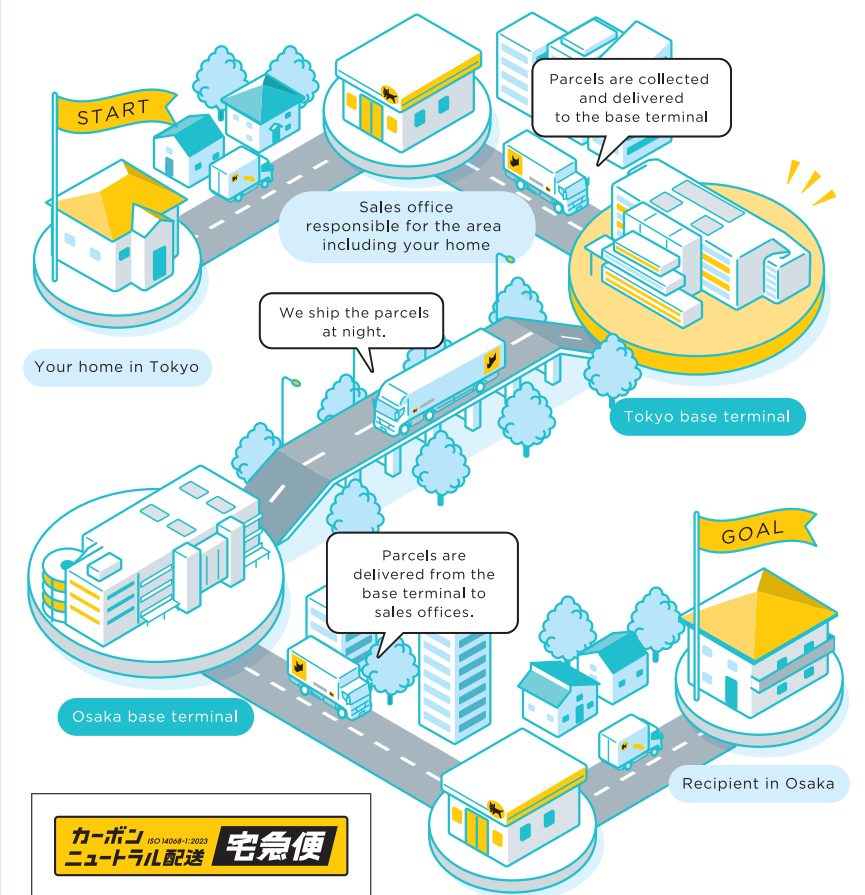
## EXHIBITION HALL

Get the picture of the social value of logistics

The projection mapping and slide-out drawer displays give a sense of the social value generated by Yamato Group.

# How is your parcel delivered?

- Delivering a parcel from Tokyo to Osaka -



カーボンニュートラル配送 宅急便

ISO 14068-1:2023

Detailed information is available on the website. (Japanese only)

Sales office responsible for the area including the destination