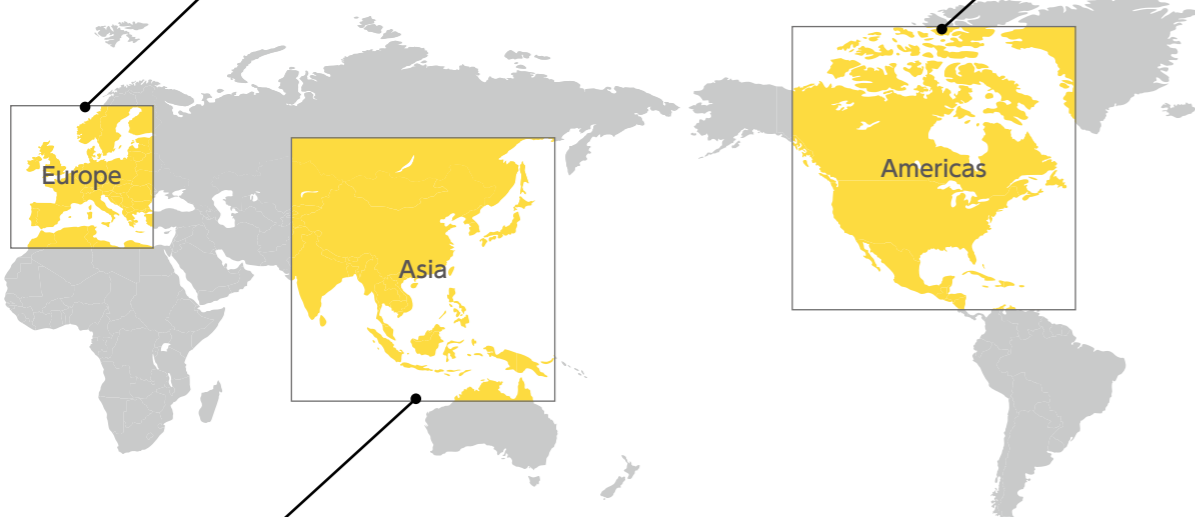
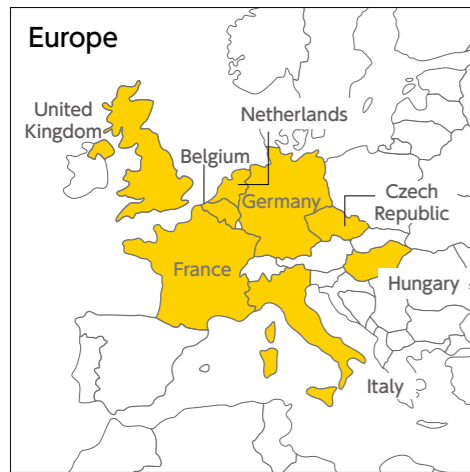


Global Network

As of March 31, 2023

25 overseas subsidiaries **24** countries and regions of operation (including representative offices and branch offices)



Countries and regions with local subsidiaries
 Countries and regions with representative offices and branch offices

— Cross-Border Trucking

Corporate Data / Stock Information

As of March 31, 2023

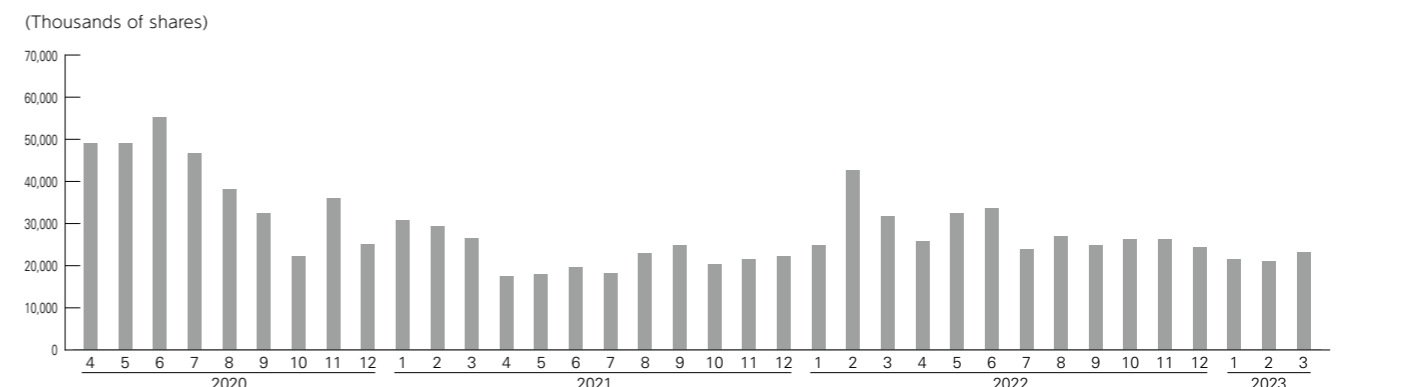
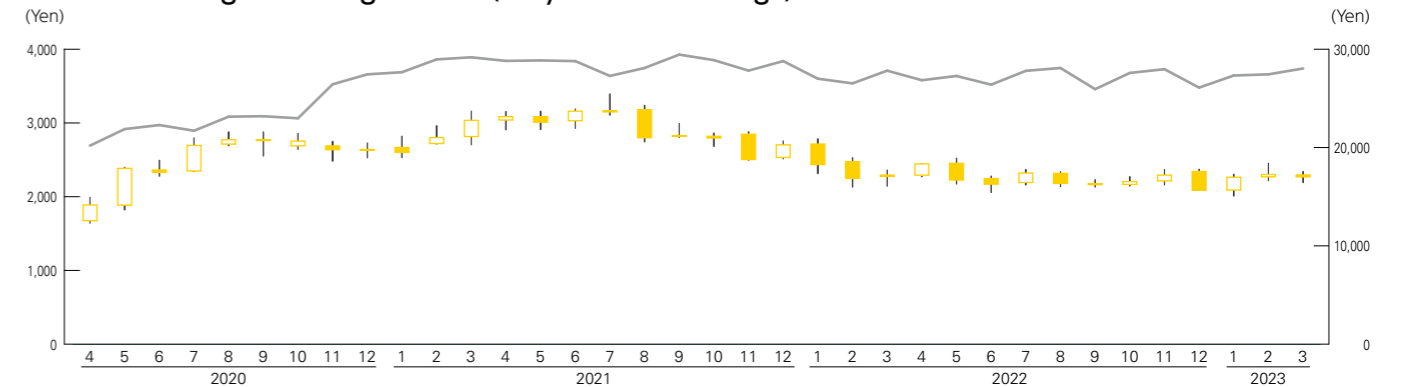
- ▶ **Company Name**
Yamato Holdings Co., Ltd.
- ▶ **Head Office**
16-10, Ginza 2-chome, Chuo-ku, Tokyo
104-8125 Japan
Telephone: 81-3-3541-4141
- ▶ **Established**
November 29, 1919
- ▶ **Registered**
April 9, 1929
- ▶ **Paid-In Capital**
127,234,791,077 yen
- ▶ **Website**
<https://www.yamato-hd.co.jp/english/>

- ▶ **Fiscal Year**
From April 1 to March 31
- ▶ **Common Stock**
Authorized: 1,787,541,000 shares
Issued: 379,824,892 shares
- ▶ **Stock Exchange Listing**
Tokyo Stock Exchange
- ▶ **Transfer Agent and Registrar**
Mizuho Trust & Banking Co., Ltd.
- ▶ **General Meeting of Shareholders**
Held in June
- ▶ **Auditor**
Deloitte Touche Tohmatsu LLC
- ▶ **Principal Shareholders**



	Percentage of total shares outstanding (excluding treasury shares)
The Master Trust Bank of Japan, Ltd. (Trust Account)	16.30%
Custody Bank of Japan, Ltd. (Trust Account)	7.69%
Yamato Employees' Shareholding Association	7.65%
Meiji Yasuda Life Insurance Company	4.08%
Nippon Life Insurance Company	4.07%
Mizuho Bank, Ltd.	2.82%
Yamato Trading-Partner Shareholding Association	2.33%
Toyota Motor Corporation	1.58%
STATE STREET BANK WEST CLIENT-TREATY 505234	1.45%
Sompo Japan Insurance Inc.	1.42%
Total	49.41%

Stock Price Range / Trading Volume (Tokyo Stock Exchange)



■ Stock price range (left scale) — Nikkei stock average (right scale) ■ Trading volume (left scale)